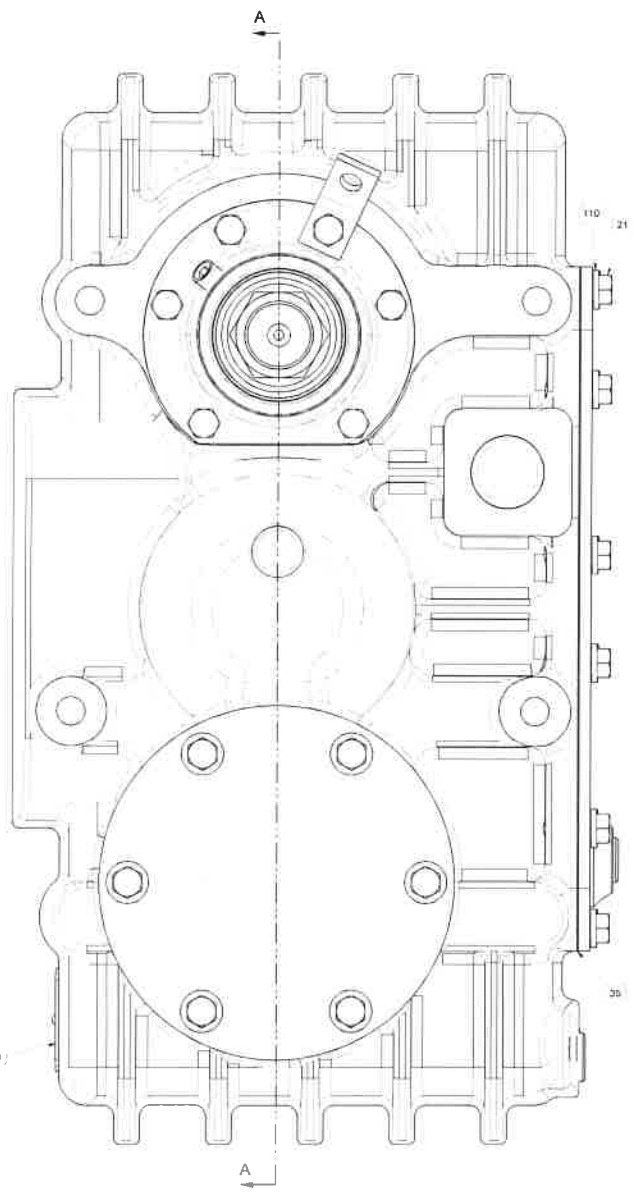


- NOTES:
- 1) SELECT SHIMS ITEM #88 TO OBTAIN 003T TO 003L END FLOAT ON THE INPUT SHAFT
 - 2) SELECT SHIMS ITEM #69 TO OBTAIN 003T TO 003L END FLOAT ON THE REAR OUTPUT SHAFT
 - 3) SELECT SHIMS ITEM #70 TO OBTAIN 003T TO 003L END FLOAT ON THE INTERMEDIATE SHAFT
 - 4 ITEM #113B 258-0222 QTY=2 FOR SHIPPING IS NOT SHOWN
 - 5 ITEM #113C 258-0223 QTY=1 FOR SHIPPING IS NOT SHOWN

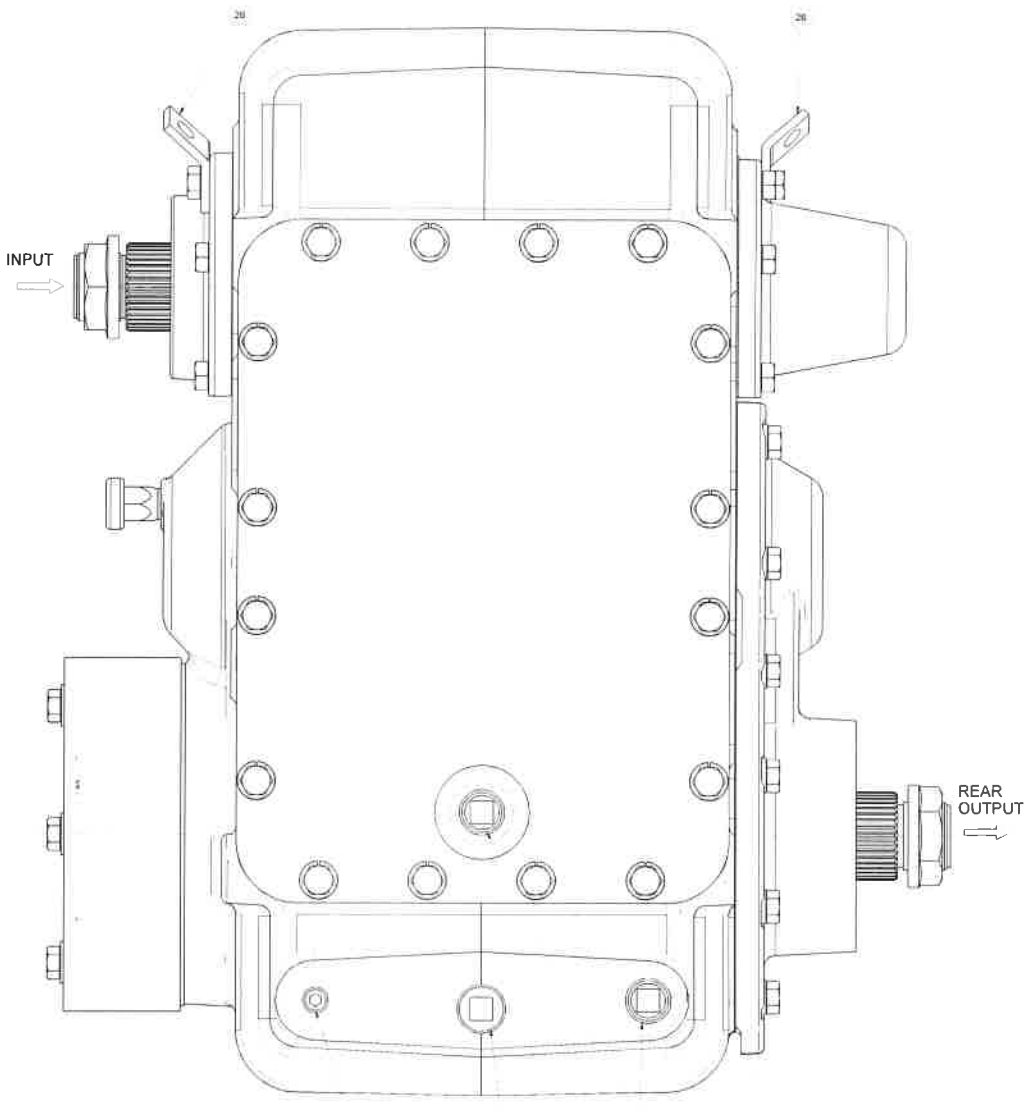
SECTION A-A
LEFT SIDE VIEW

© 2014 FABCO Automotive Corporation <small>This drawing is the property of FABCO Automotive Corp. and is subject to patent laws. The drawings shall not be reproduced, stored in a retrieval system, or transmitted in any form or by any means, electronic, mechanical, photocopying, recording, or by any information storage and retrieval system, without the prior written permission of FABCO Automotive Corp.</small>		INCH 1:1 08/23/13	873-0061-009 287	 FABCO U AYALA U.S.A.	TRANSFER CASE SINGLE SPEED MODEL TC-137 873-0061-009 C 1 2
--	--	-------------------------	---------------------	-----------------------------	--

Rev	Description	By	Date
1	REV 0011.1		



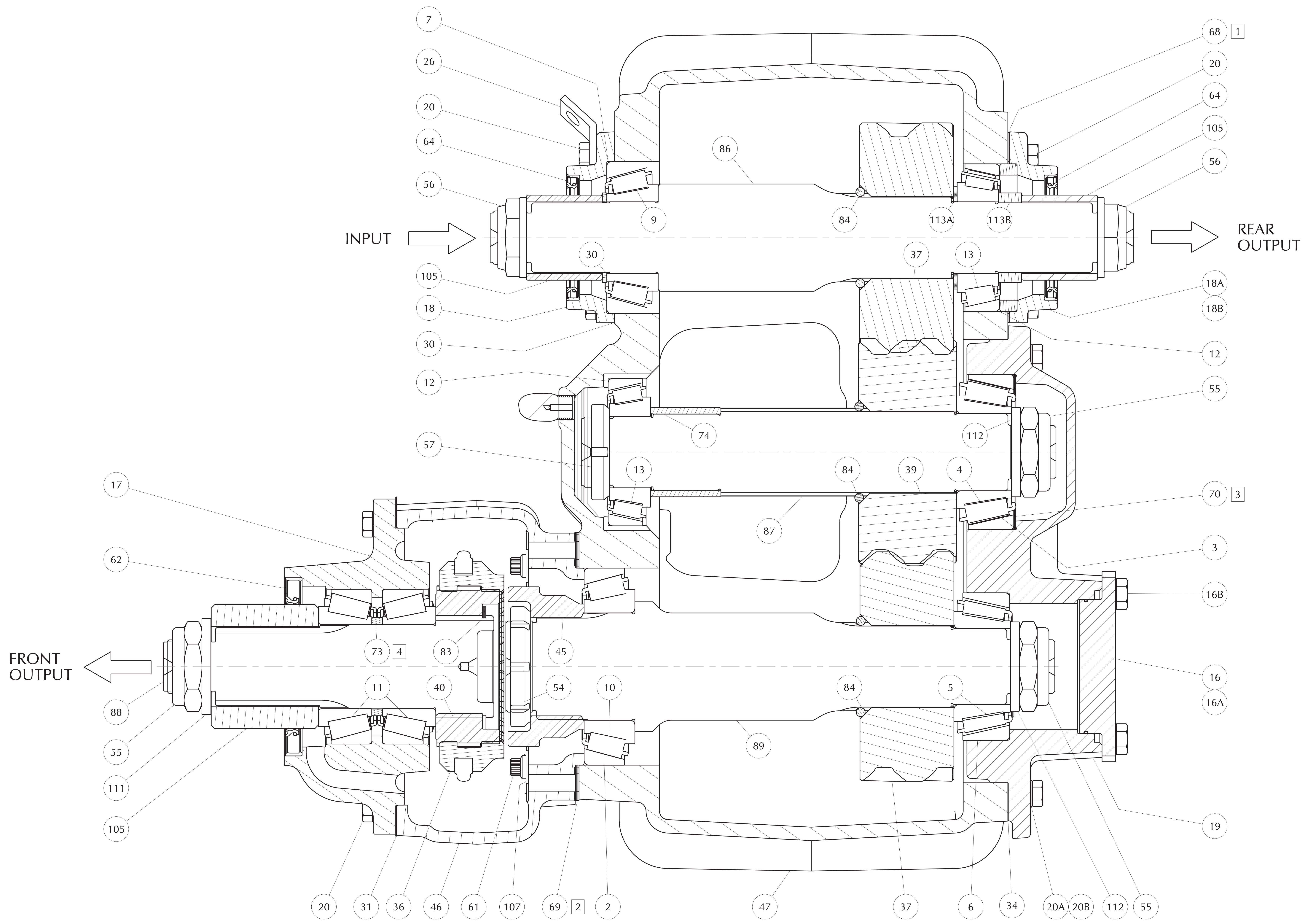
FRONT VIEW



LEFT SIDE VIEW

© 2014 FABCI Automotive Corporation <small>This drawing is the property of FABCI Automotive Corp. and is subject to patent laws. The proprietary information contained in this drawing and its use in this drawing is limited to the use for manufacturing purposes under the express written permission of FABCI Automotive Corp.</small>	1/4" = 1" INCH DIMENSIONS IN INCHES UNLESS OTHERWISE SPECIFIED	873-0061-009		TRANSFER CASE SINGLE SPEED MODEL TC-137
				1:1 08/13/13 287.7

873-0061-009 C 2



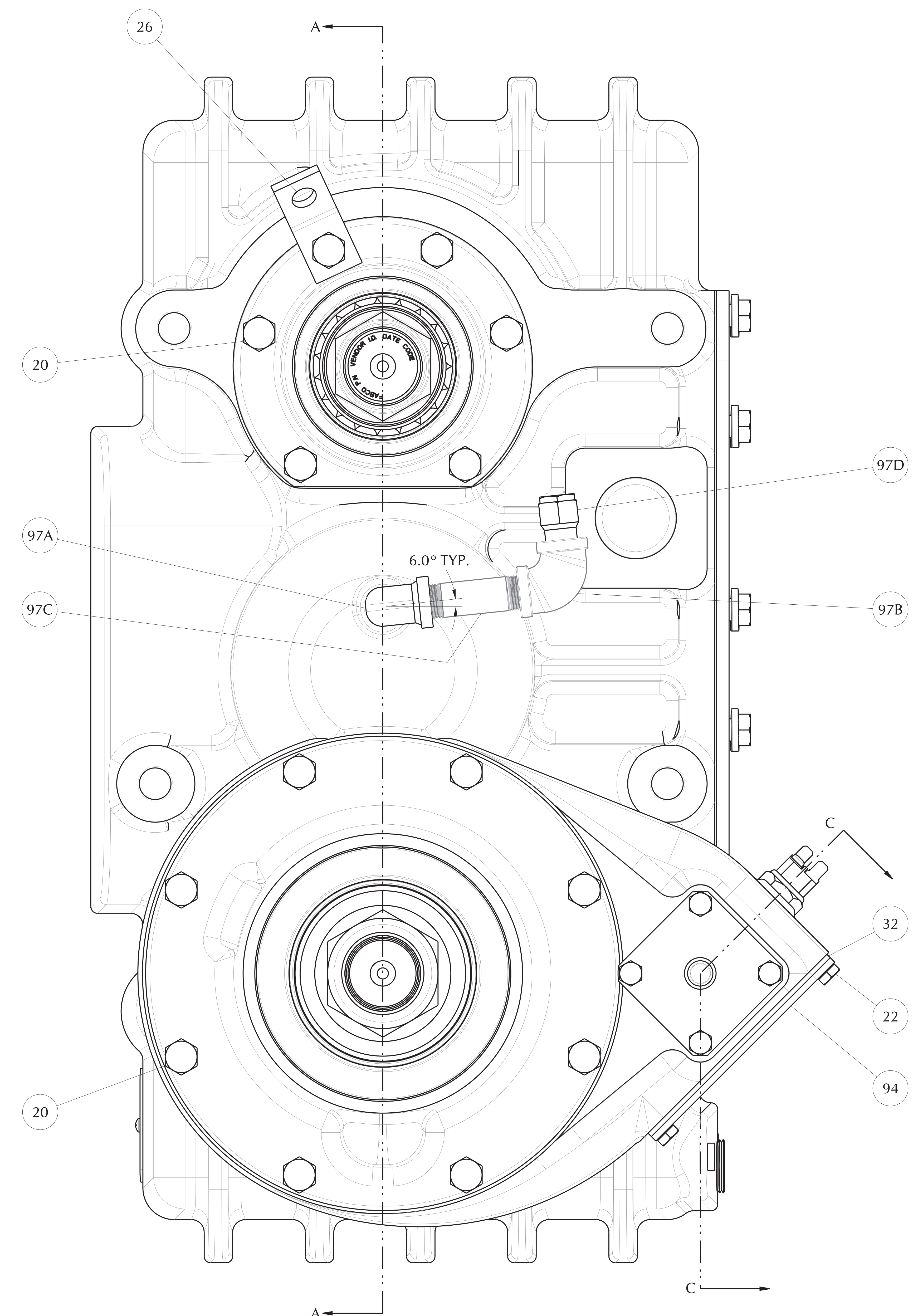
873-0126-110

SECTION A-A
SCALE 1.000
LEFT SIDE VIEW

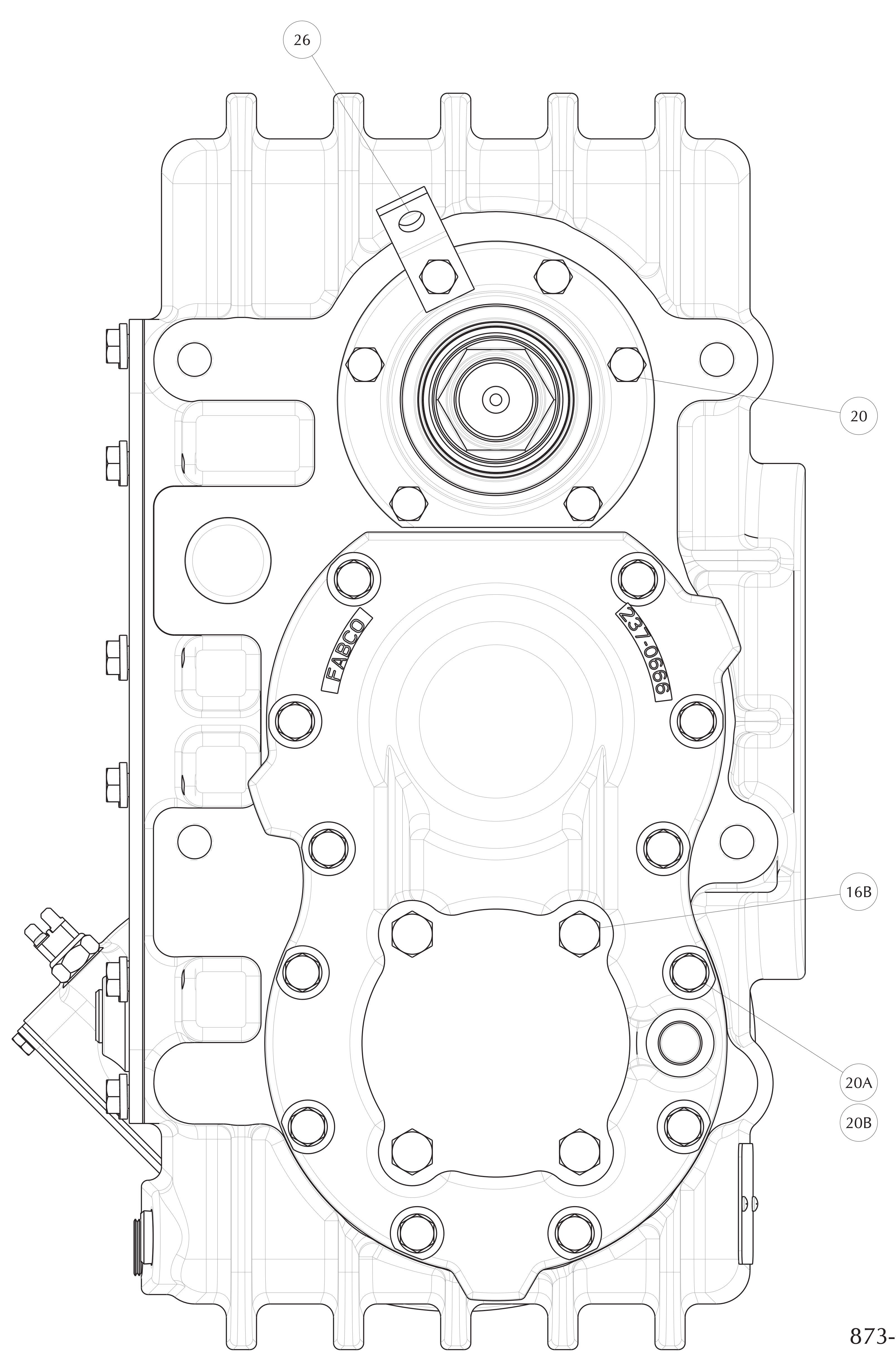
- NOTES:
- 1 SELECT SHIMS, ITEM 68, TO OBTAIN .003T TO .003L END FLOAT ON THE UPPER SHAFT.
 - 2 SELECT SHIMS, ITEM 69, TO OBTAIN .003T TO .003L END FLOAT ON THE LOWER OUTPUT SHAFT.
 - 3 SELECT SHIMS, ITEM 70, TO OBTAIN .003T TO .003L END FLOAT ON THE INTERMEDIATE SHAFT.
 - 4 SELECT SHIMS, ITEM 73, TO OBTAIN .003T TO .003L END FLOAT ON THE LOWER FRONT OUTPUT SHAFT.

Material - Heat Treatment - Finish		Where used	
Unless otherwise specified, all tolerances are as follows: FINISHES: RUNDNESS: .005 TO FAL CONCENTRICITY: .005 TOTAL CYLINDRICITY: .003 PARALLELISM: .005 FLATNESS: .005 POSITION: .005 ROUNDNESS: .003 STRAIGHTNESS: .005 SYMMETRY: .005 ANGULARITY: .030 PERPENDICULARITY: .005		Remove sharp corners & burrs. DECIMALS: .XX = .000 .XXX = .010 FRACTIONS: 1/32 DRILLED HOLES: .002 + .008 SURFACE FINISH: 250 RMS BASIC, EXACT DIMENSION	
The design and technical information appearing on this drawing is the property of Fabco Automotive Corp. and is disclosed in confidence. It is not to be copied, reproduced, revealed to, or appropriated by others, either in whole, or in part, without the expressed or firm consent of Fabco Automotive Corp. This drawing shows final dimensions. Machinery must allow for subsequent processing, plating, heat treatment, etc.		Drawing or Part Number 873-0126-110 FULL Do not scale drawing	
Part Number 873-0126-110		Drawing or Part Number 873-0126-110 Latest Rev. 1 OF 3	

8 7 6 5 4 3 2 1



FRONT VIEW

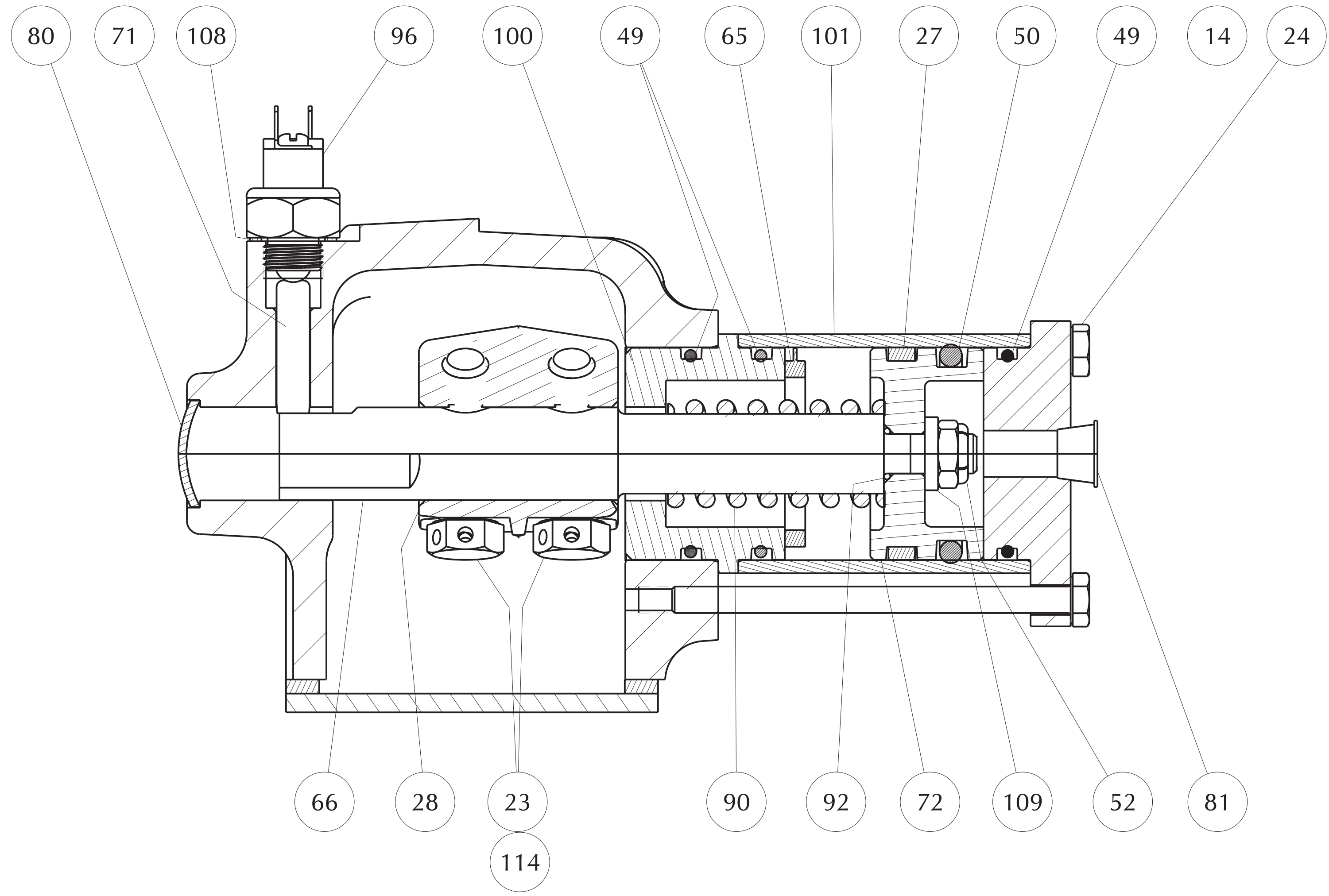


REAR VIEW

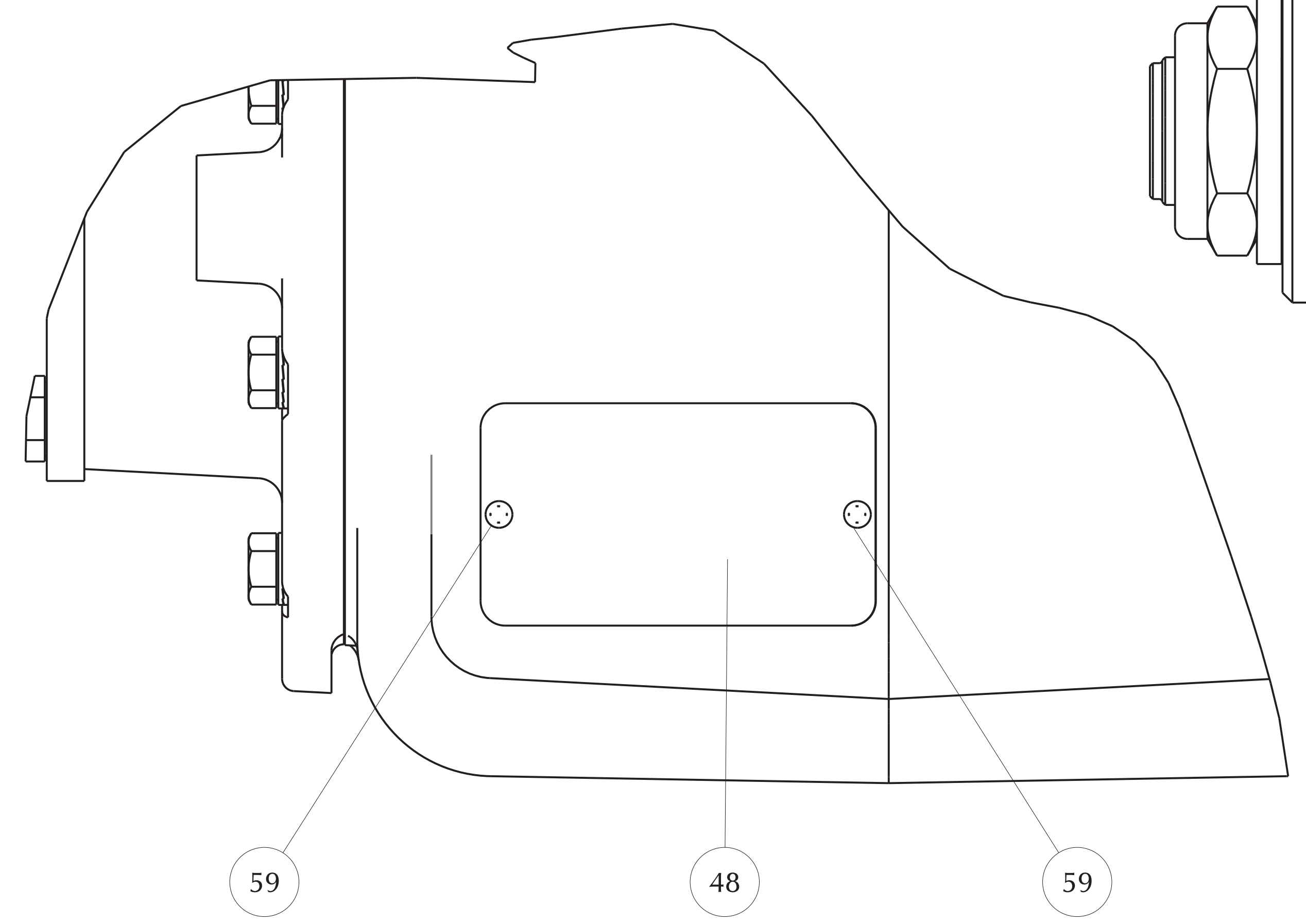
873-0126-110

Material - Heat Treatment - Finish		Where used	
<p>The design and technical information appearing on this drawing is the property of Fabco Automotive Corp. and is disclosed in confidence. It is not to be copied, reproduced, revealed to, or appropriated by others, either in whole, or in part, without the expressed or tacit consent of Fabco Automotive Corp.</p> <p>This drawing shows final dimensions. Machining must allow for subsequent processing, plating, heat treatment, etc.</p>		<p>Remove sharp corners & burrs.</p> <p>Fabco AUTOMOTIVE CORPORATION 151 LAWRENCE DR., LIVERMORE, CA 94551</p> <p>Drawn: L. TRAN 03/24/14 Checked: [] Approved: [] Date: []</p>	
<p>Unless otherwise specified, all tolerances are as follows:</p> <p> RUNDNESS: .005 TO FAL CONCENTRICITY: .005 TOTAL PARALLELISM: .003 FLATNESS: .005 POSITION: .005 ROUNDNESS: .003 STRAIGHTNESS: .005 SYMMETRY: .005 ANGULARITY: .030 PERPENDICULARITY: .005 </p> <p> DECIMALS: .XX = .000 .XXX = .000 .XXXX = .010 FRACTIONS: 1/32 DRILLED HOLES: .002 + .008 SURFACE FINISH: 250 RMS BASIC, EXACT DIMENSION </p> <p>All tolerance interpretations per ANSI Y14.5</p>		<p>873-0126-110</p> <p>SCALE: FULL</p> <p>Do not scale drawing</p>	
<p>TRANSFER CASE, THRU SHAFT, MODEL TC-137</p>		<p>Drawing or Part Number: 873-0126-110</p> <p>Sheet: 2 OF 3</p>	

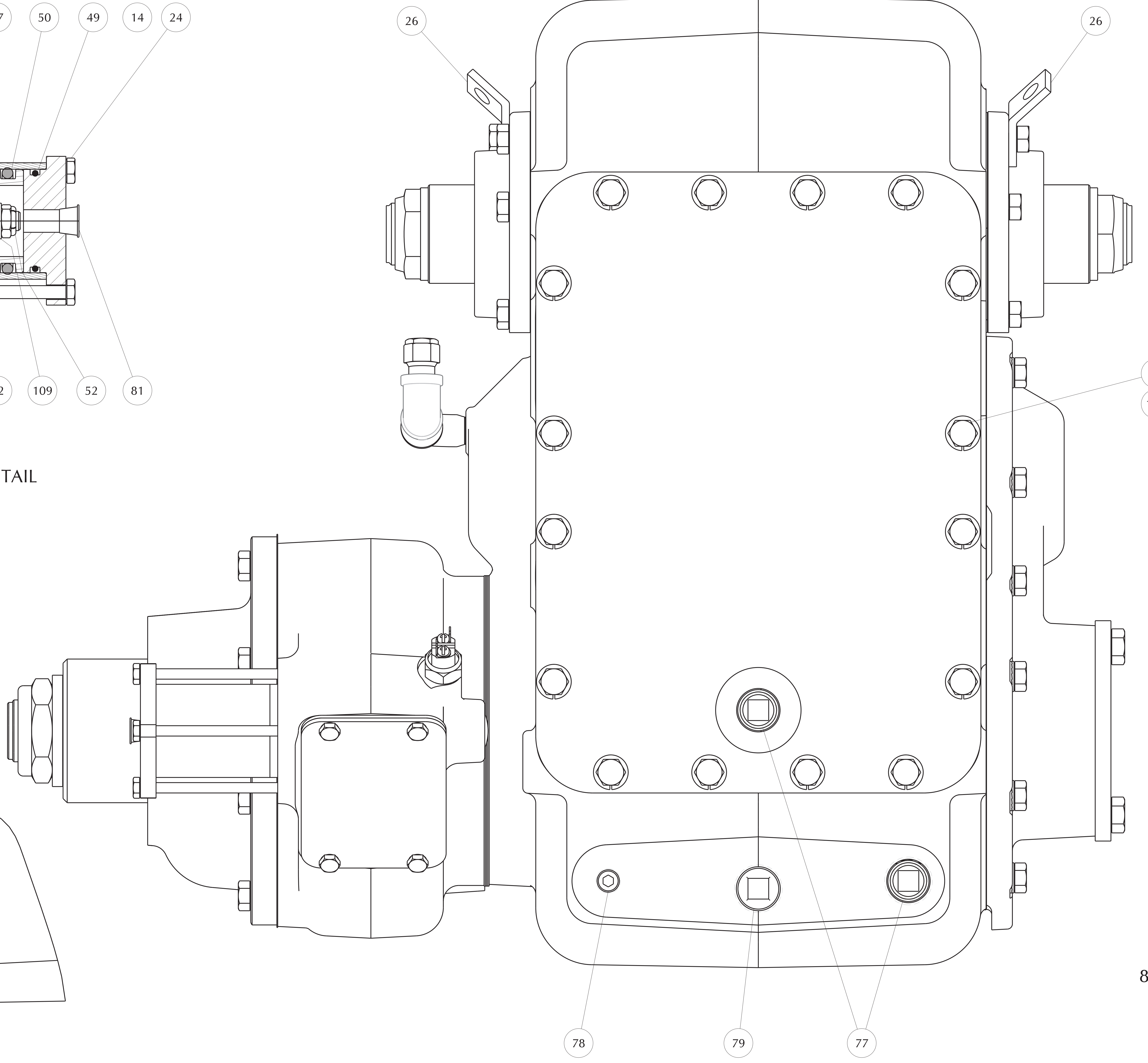
8 7 6 5 4 3 2 1



SECTION C-C
FRONT DECLUTCH SHIFT DETAIL
SCALE 1.250



RIGHT SIDE VIEW (PARTIAL)
DATA PLATE DETAIL



LEFT SIDE VIEW

873-0126-110

Material - Heat Treatment - Finish		Where used	
Remove sharp corners & burrs.			
The design and technical information appearing on this drawing is the property of Fabco Automotive Corp. and is disclosed in confidence. It is not to be copied, reproduced, revealed to, or appropriated by others, either in whole, or in part, without the expressed or item consent of Fabco Automotive Corp. This drawing shows final dimensions. Machining must allow for subsequent processing, plating, heat treatment, etc.	Unless otherwise specified, all tolerances are as follows: RUNDUITY .005 TOTAL CONCENTRICITY .005 PARALLELISM .005 FLATNESS .005 POSITION .005 ROUNDNESS .003 STRAIGHTNESS .005 SYMMETRY .005 ANGULARITY .030 PERPENDICULARITY .005	DECIMALS: .XX ± .050 .XXX ± .030 .XXXX ± .010 FRACTIONS: ± 1/32 DRILLED HOLES: ± .002 + .008 SURFACE FINISH: 250 RMS BASIC, EXACT DIMENSION	Drawing or Part Number 873-0126-110
	Part Number 873-0126-110		Drawing or Part Number 873-0126-110